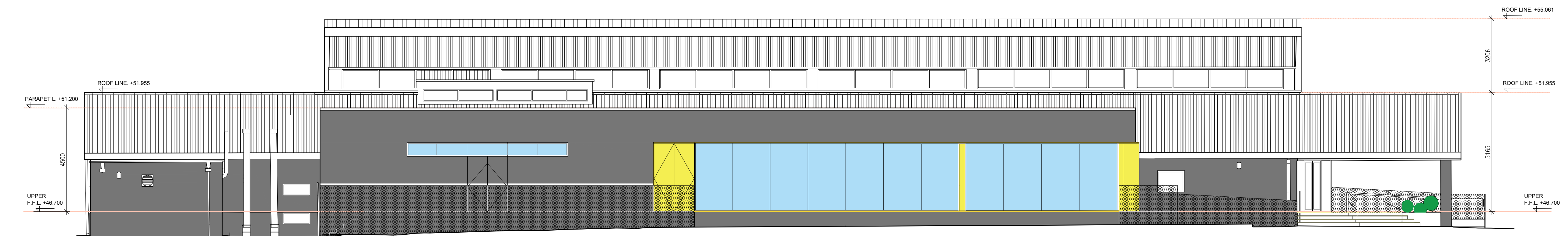


NORTH-EAST ELEVATION AS PROPOSED



SOUTH-WEST ELEVATION AS PROPOSED

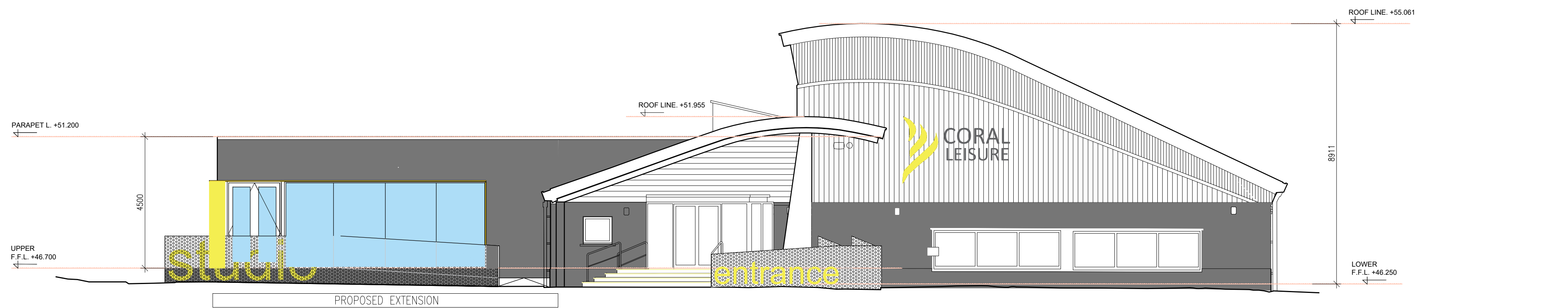
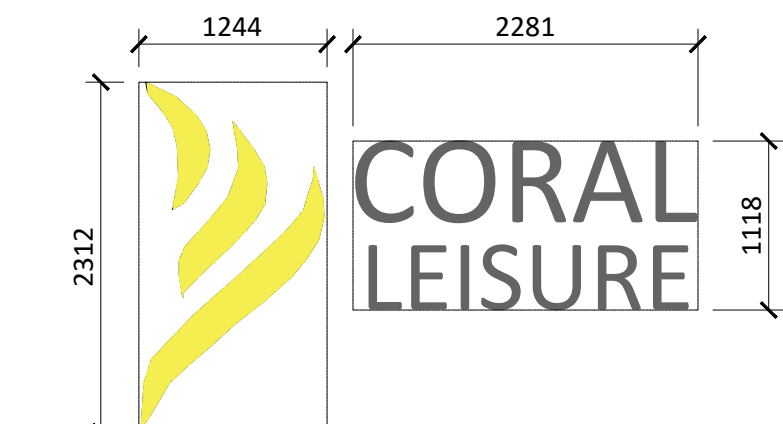
SIGN 01
PRINTED SIGN ON PRESSED METAL BALUSTRADE
7.24 M2



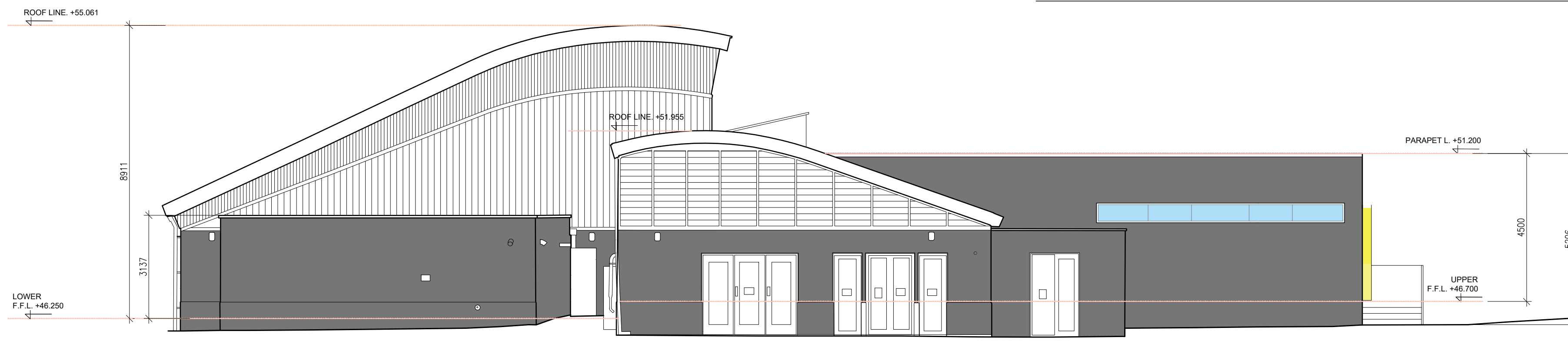
SIGN 02
PRINTED SIGN ON PRESSED METAL BALUSTRADE
3.38 M2



SIGN 03
METAL STAND OFF LETTERING SIGN
3.38 M2



SOUTH-EAST ELEVATION AS PROPOSED



NORTH-WEST ELEVATION AS PROPOSED

NOTES

PLANNING

This drawing has been produced for Planning purposes only. This drawing is not to be used for pricing. This drawing is not for Construction. Do not scale from this drawing. Figured dimensions only to be taken from this drawing. All dimensions must be checked on site prior to construction, demolition or manufacturing. All dimensions in millimetres unless otherwise stated. Drawings to read in conjunction with all project documentation. This drawing must not be reproduced in whole or part without written consent. © Demesne Architects Limited. All Rights Reserved.

FINISHES

NEW ROOF: FLAT ROOF WITH PARAPET, BITUMEN FINISH

NEW WINDOWS TO BE POLYESTER POWDERCOATED ALUMINIUM WINDOWS GREY TO MATCH EXISTING AESTHETIC WITH PRESSED METAL FEATURE SURROUND IN SULPHUR YELLOW RAL TBC

NEW EXTERNAL WALLS: PAINTED RENDER IN DARK GREY. COLOUR TBC

EXISTING EXTERNAL WALLS TO BE REPAINTED IN DARK GREY. COLOUR TBC

EXISTING METAL CLADDING TO BE CLEANED AND REPAIRED

NEW SIGNAGE TBC

SIGNAGE AREA TABLE

SIGN 01	7.24 m2
SIGN 02	3.38 m2
SIGN 03	5.42 m2
TOTAL	16.04 m2

REV	DATE	DESCRIPTION	AMENDED	GPS
-----	------	-------------	---------	-----

PROJECT: Wicklow Swimming Pool, Station Road, Bollarney North, Wicklow,

CLIENT: WICKLOW COUNTY COUNCIL

DRAWING: ELEVATIONS AS PROPOSED

PROJECT NO. 5644 SUITABILITY: PLANNING STATUS: PART 8

SCALE 1:100 SHEET: A1 DATE: 29.01.2024

DRAWING NO. (01) 009

DRAWN BY: LBD CHECKED BY: SS APPROVED BY: ..

REVISION: A

demesne
Architects + Interior Designers

Demesne Architects + Interior Designers
Desmond House, Main Street
Maynooth, Co. Kildare, W23 Y8X6
T: +353 (0)1 610 6900
E: info@demesne-architects.ie
W: www.demesne-architects.ie